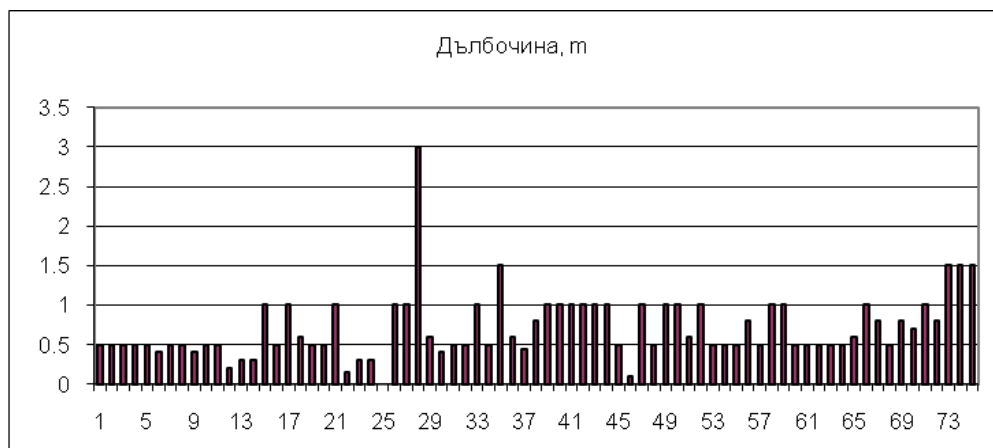
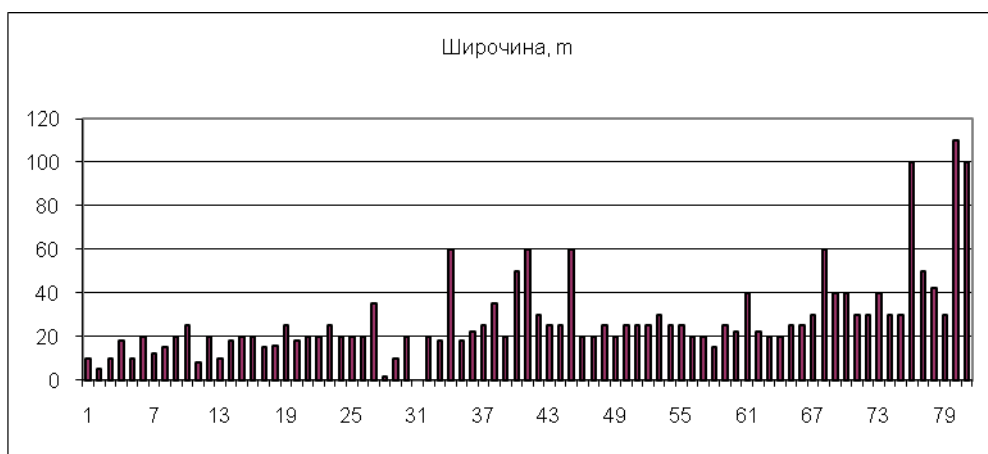


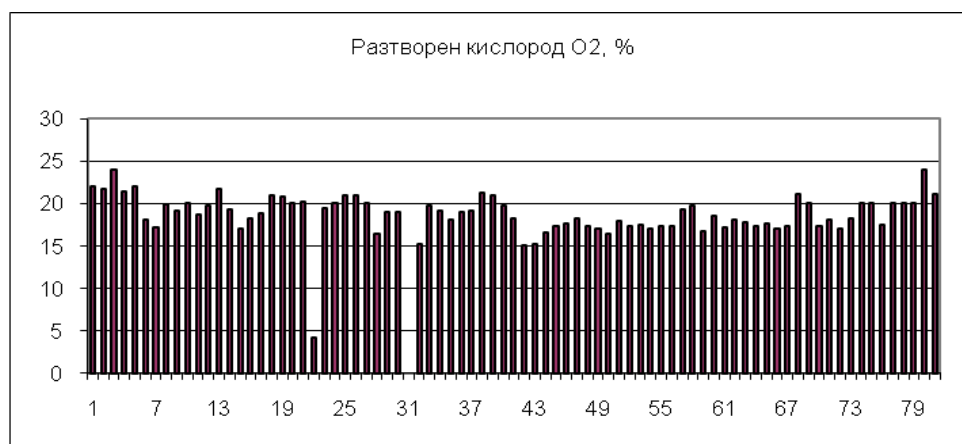
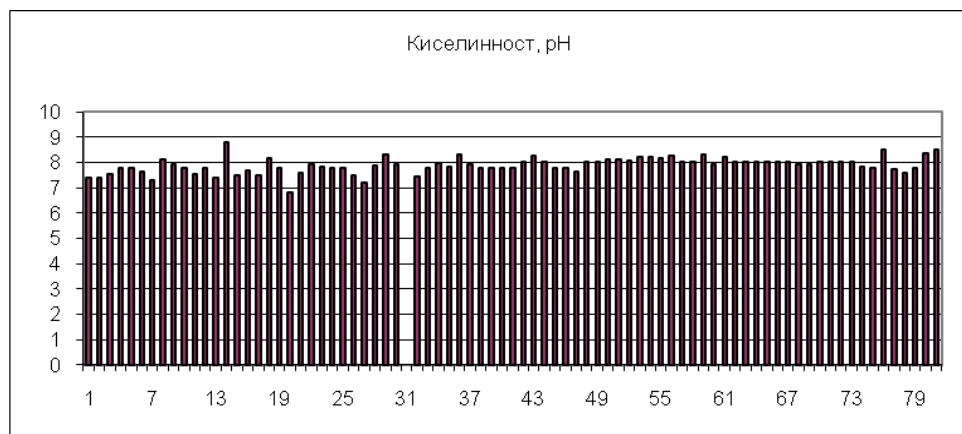
ЕКОЛОГИЧЕН МОНИТОРИНГ НА РЕКА ДРАГОВИЩИЦА (ЗИМЕН МОНИТОРИНГ 2015-2016)

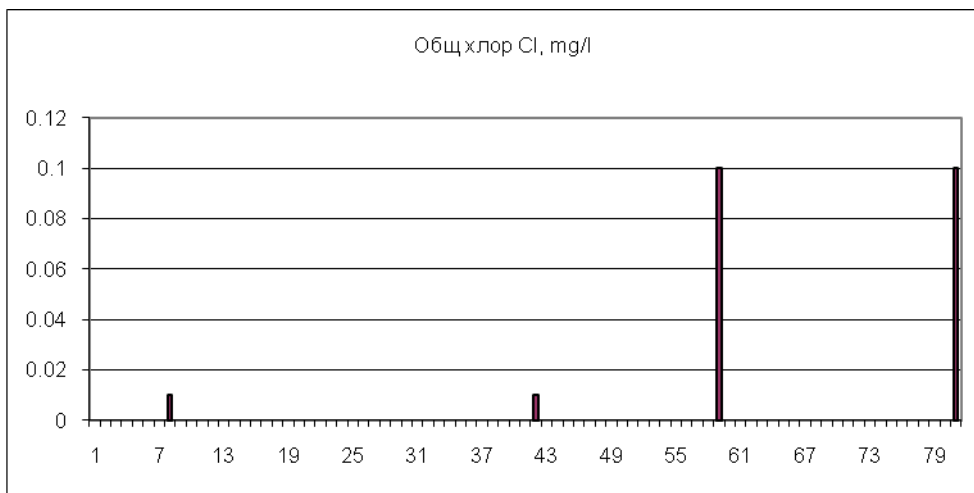
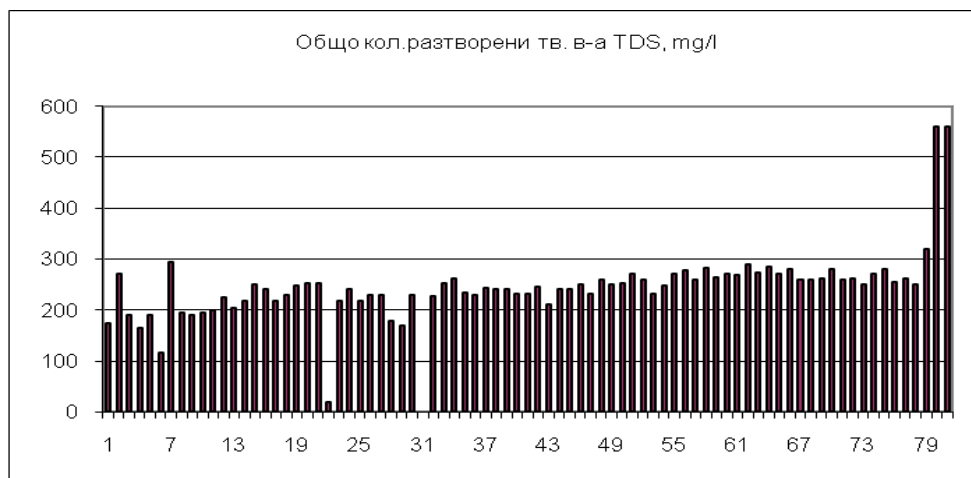
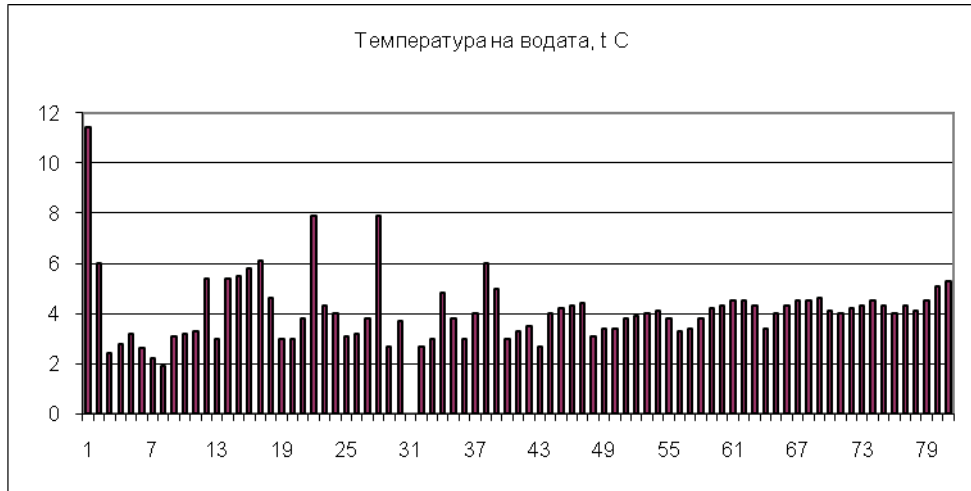
ПРИЛОЖЕНИЕ СТАТИСТИКА

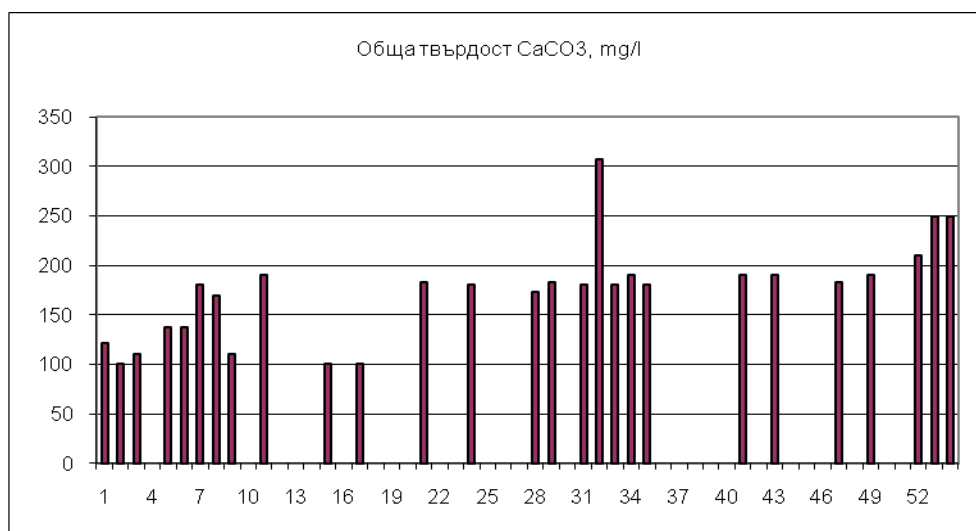
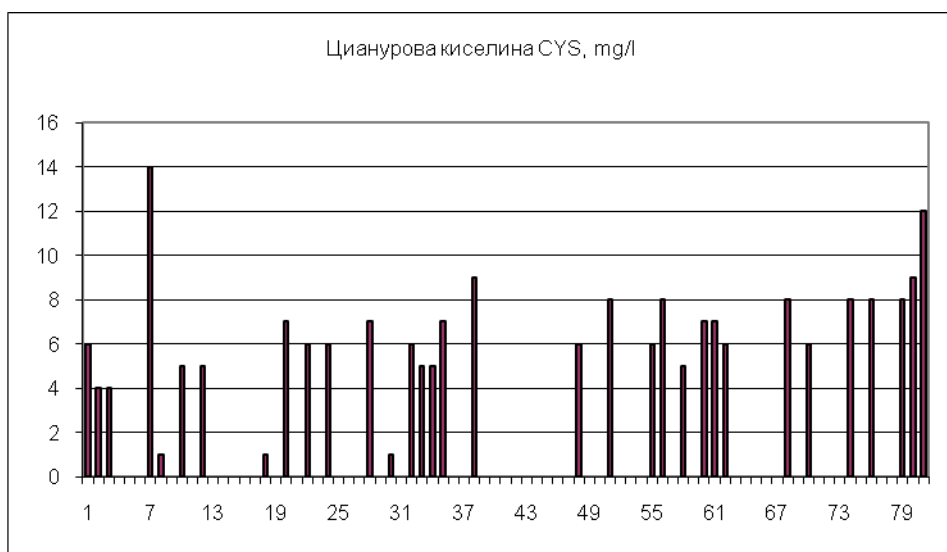
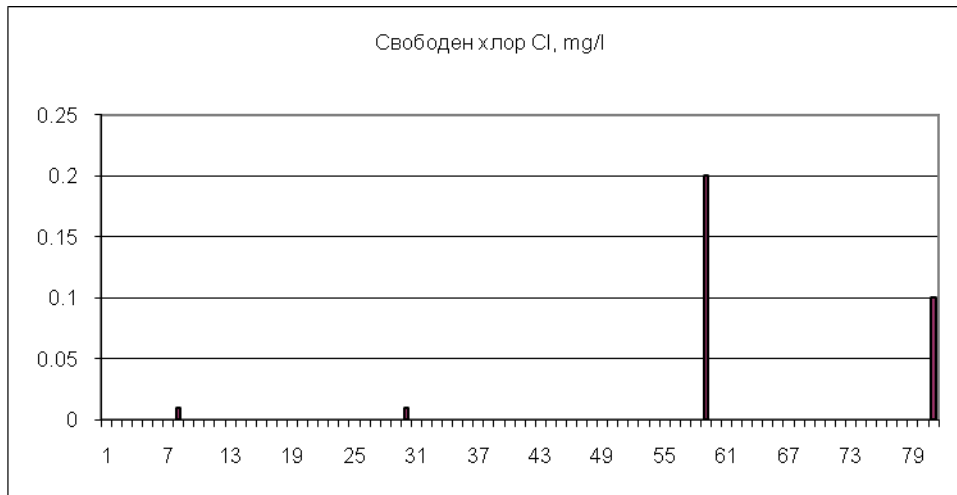
Антон Сотиров, Георги Табаков, Валерия Стоичкова, Михаела Йерусалимова,
Светослав Йорданов, Ралица Тасева, Лусия Кулкина

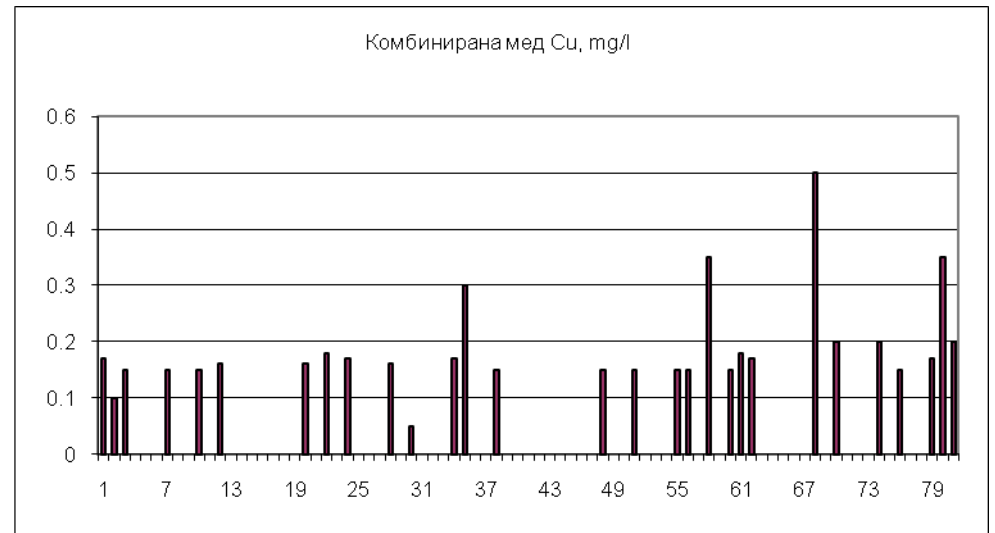
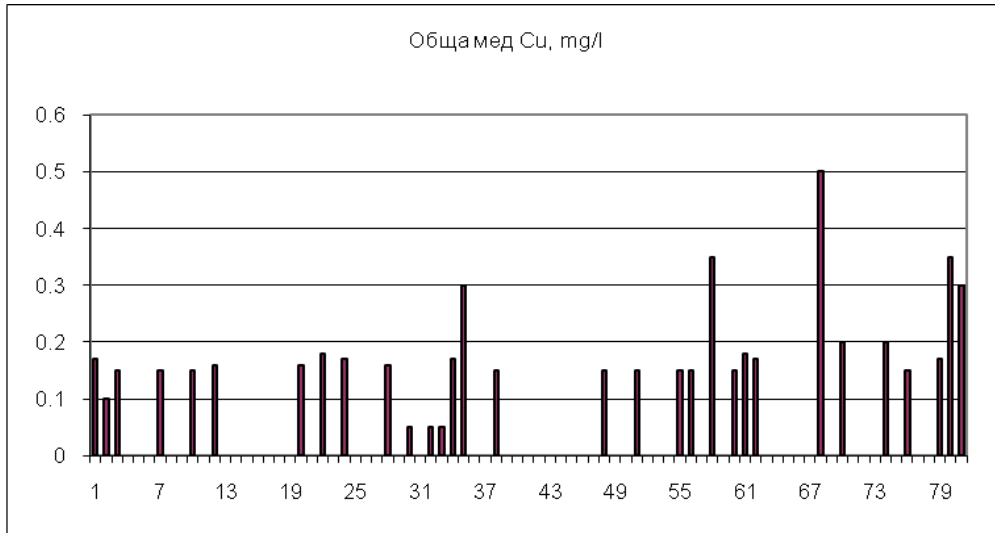
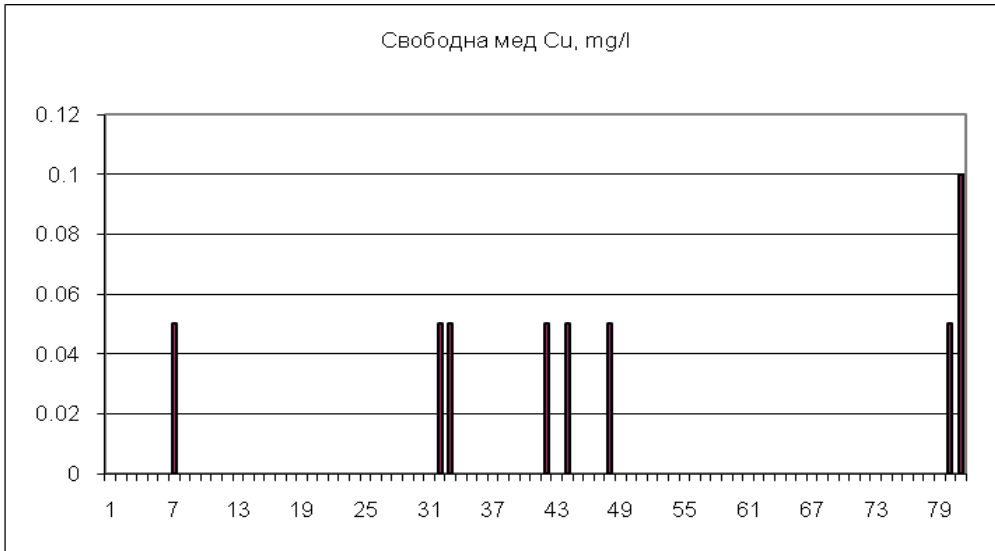
СТАТИСТИЧЕСКА ОБРАБОТКА НА ПОЛУЧЕНИТЕ РЕЗУЛТАТИ

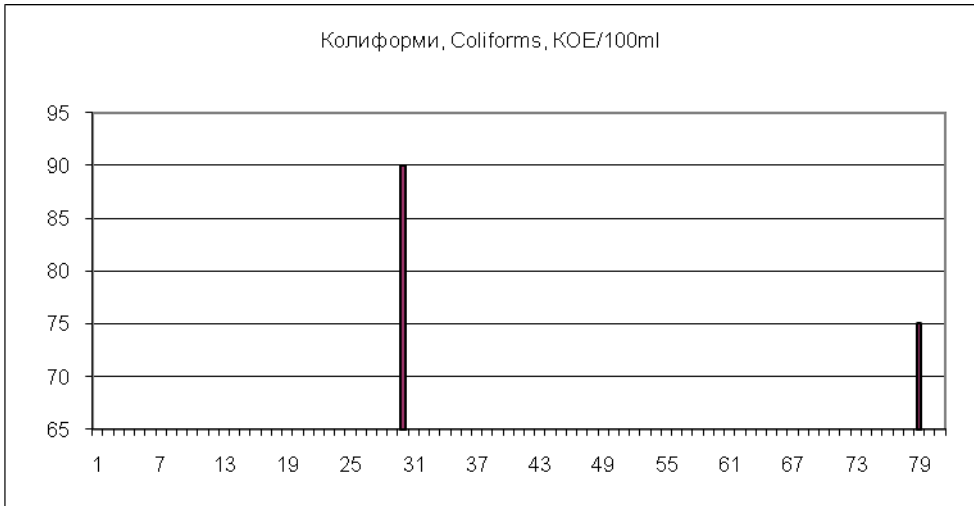
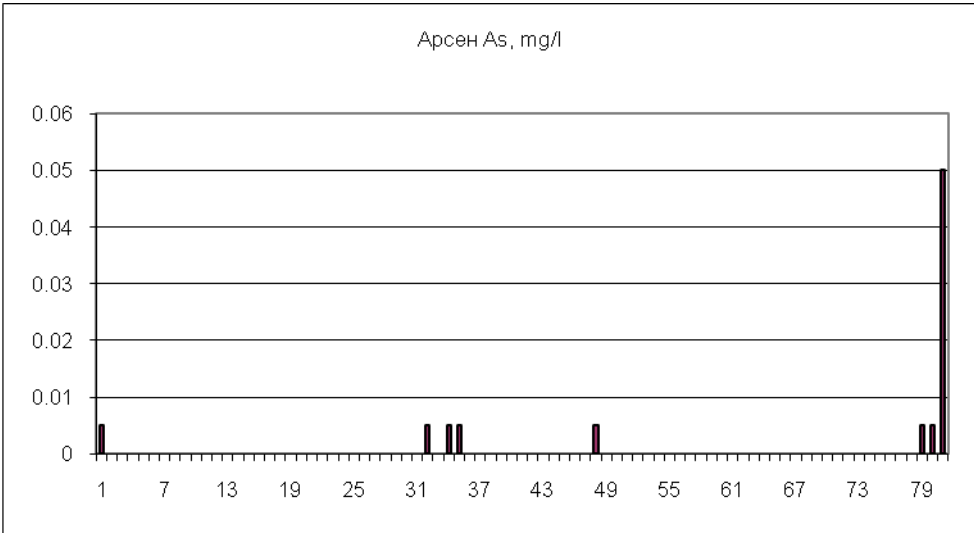
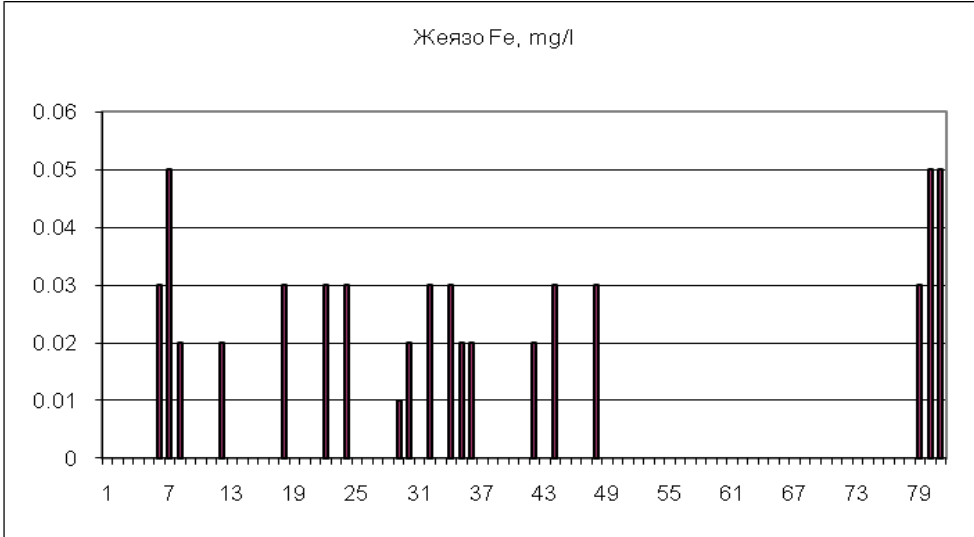


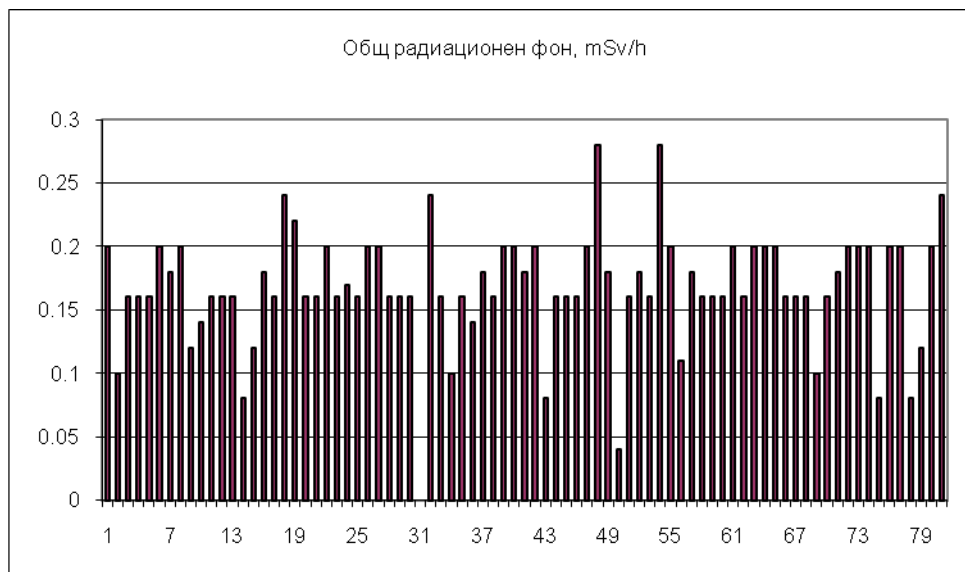
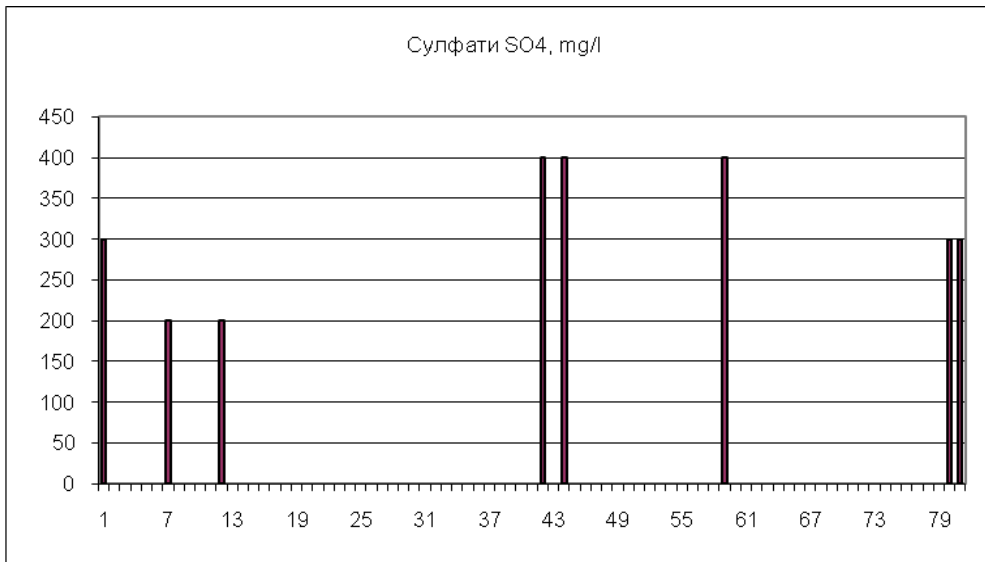
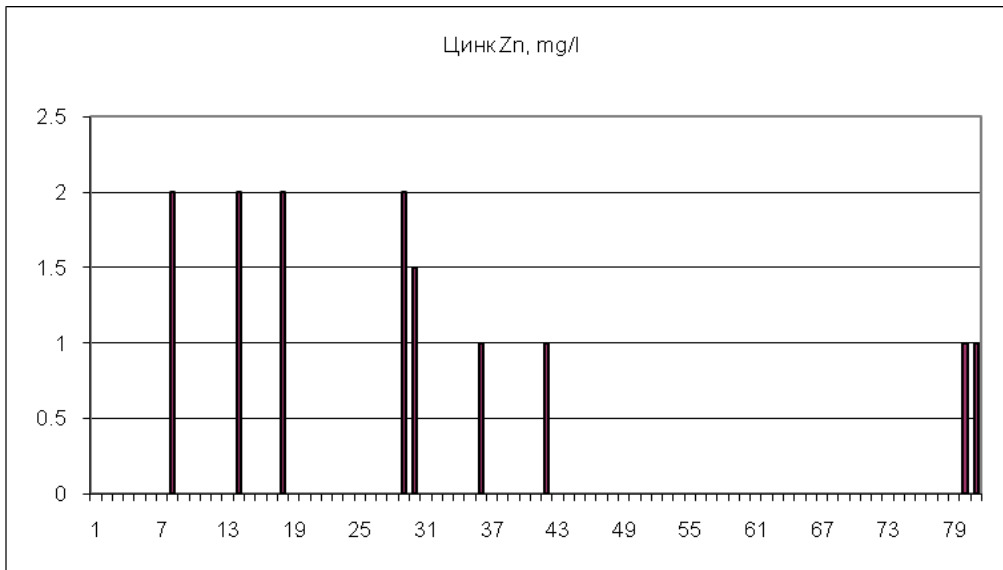


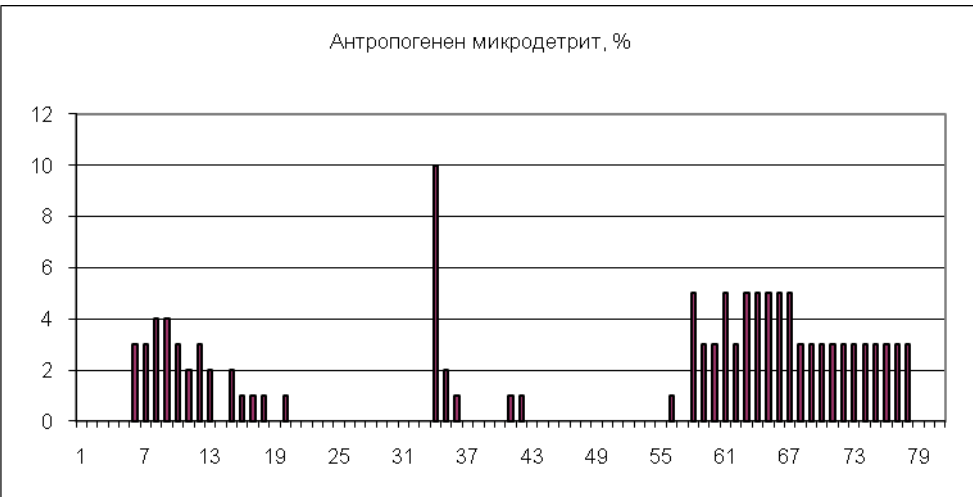
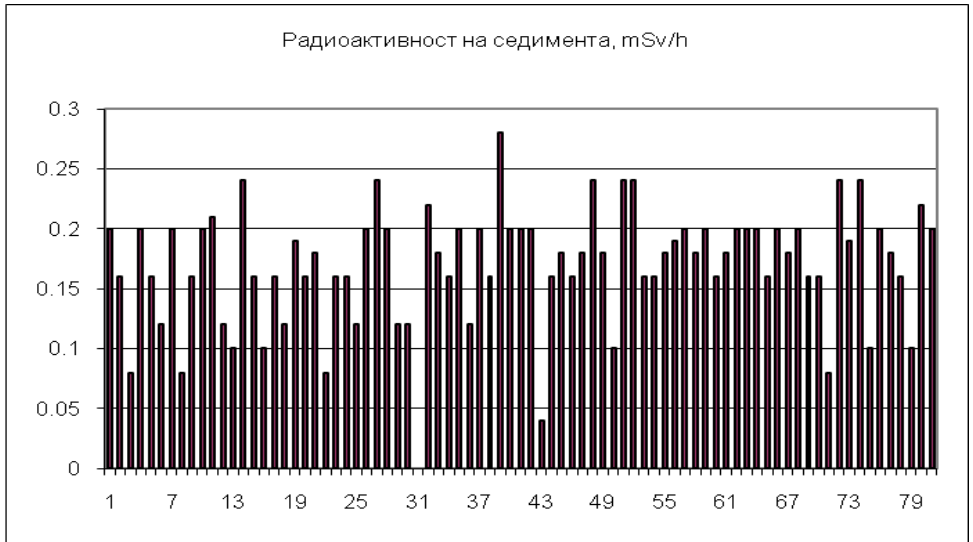
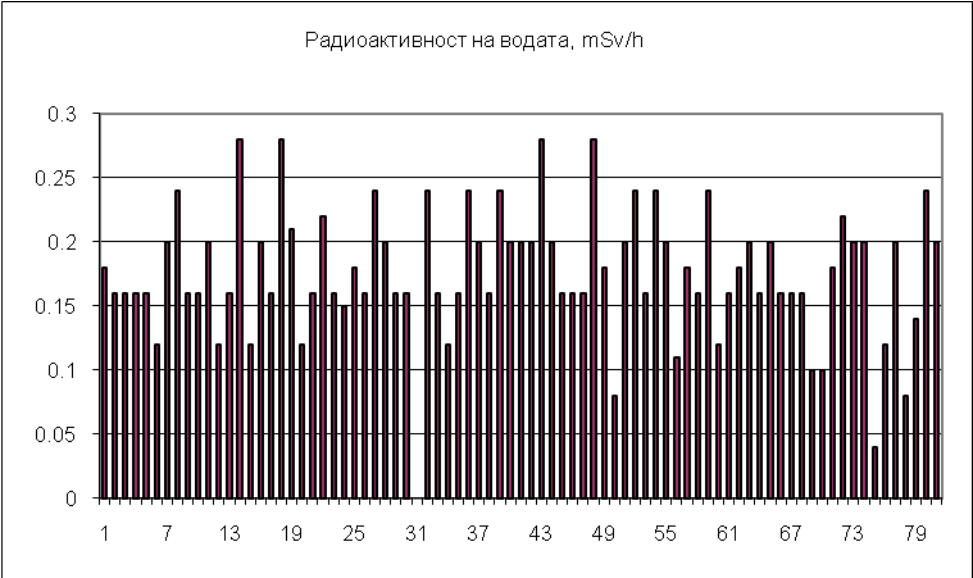


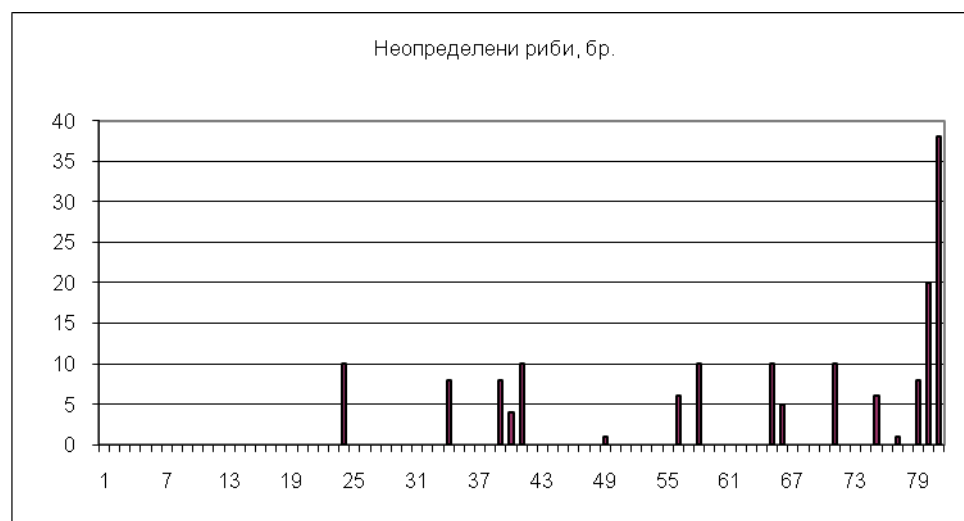
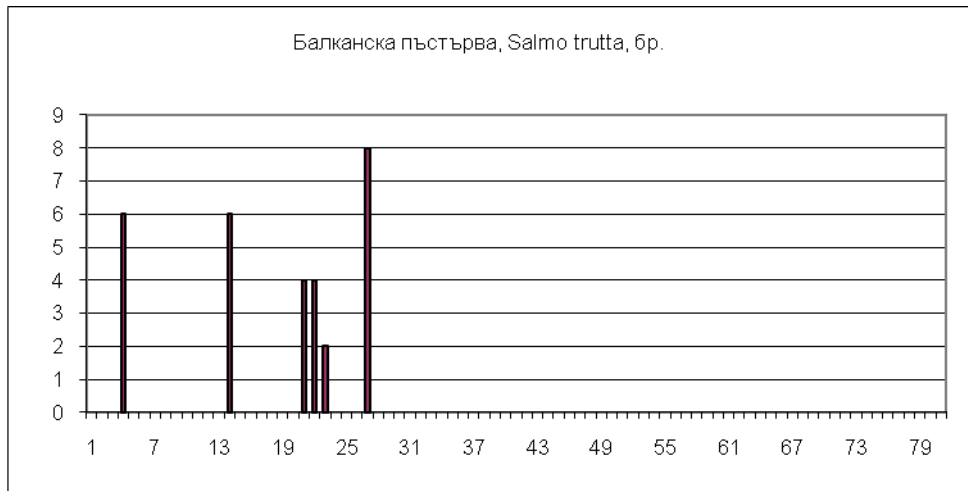




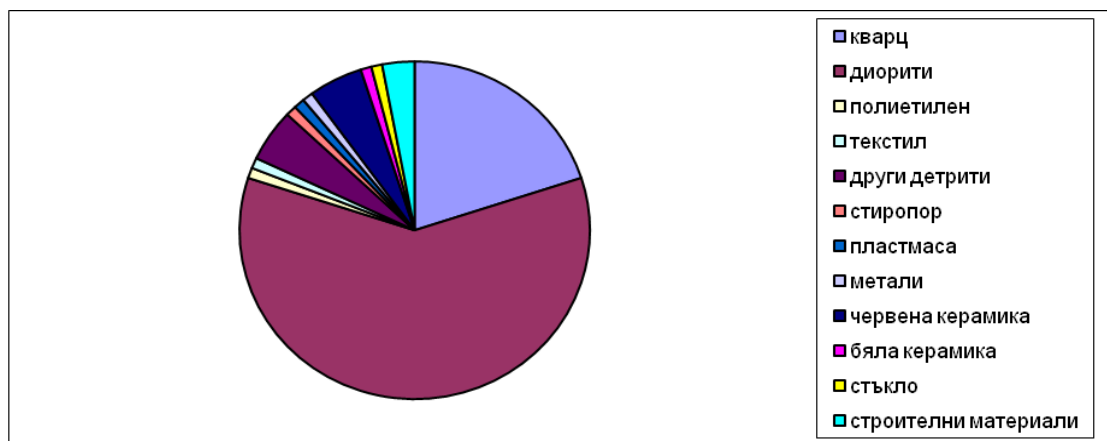




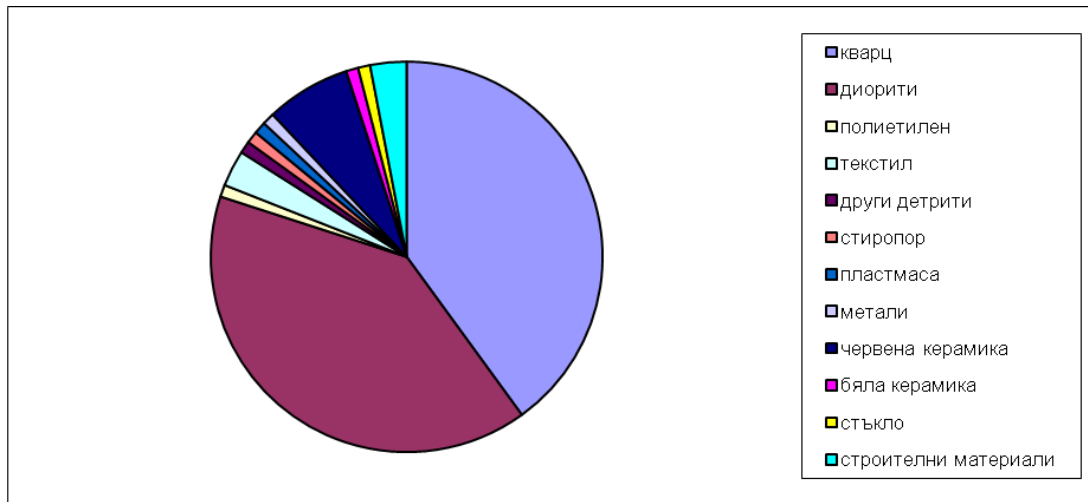




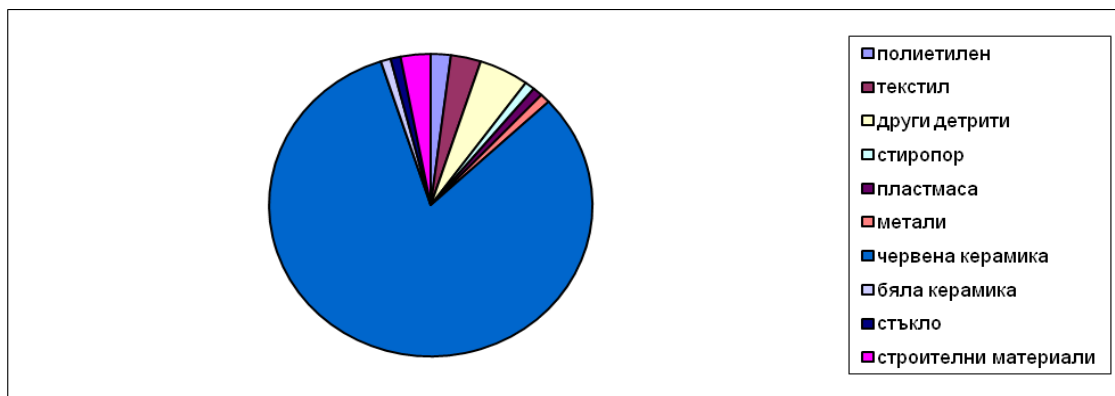
Профил на антропогенния микродетрит в седимента на река Драговищица.



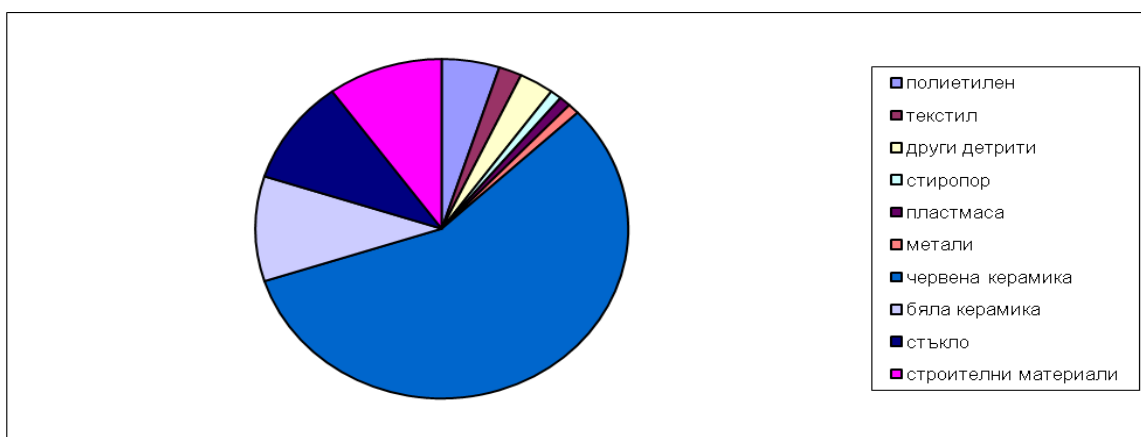
Профил на седимента и антропогенния микродетрит в планинската част на реката, с включено минерално съдържание, обемни проценти Vol.%



Профил на седимента и антропогенния микродетрит в равнинната част на реката, с включено минерално съдържание, обемни проценти Vol.%



Профил на антропогенния микродетрит в равнинната част на реката, с изключено минерално съдържание, обемни проценти Vol.%



Профил на антропогенния микродетрит в някои замърсени пункта на сръбската част на реката (планинска), с изключено минерално съдържание, обемни проценти Vol.%.